

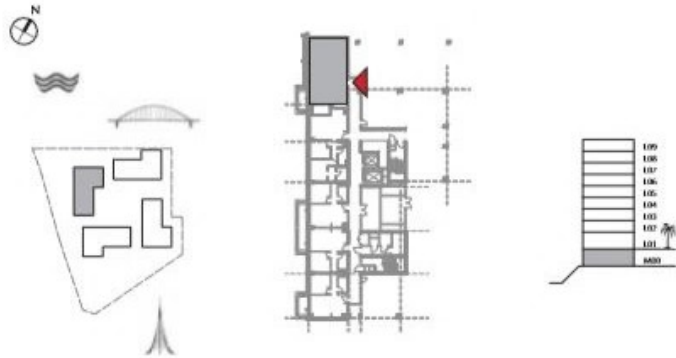
DUBAI CREEK  
HARBOUR

BAYSHORE AT  
CREEK BEACH

BUILDING 2  
MEZZANINE LEVEL  
UNIT M01

2 BEDROOM

APARTMENT AREA	92.55 SQ.M.	996.20 SQ.FT.
BALCONY AREA	7.89 SQ.M.	82.77 SQ.FT.
TOTAL AREA	100.24 SQ.M.	1078.97 SQ.FT.



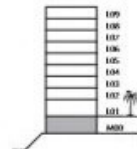
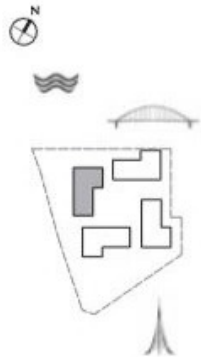
DUBAI CREEK  
HARBOUR

BAYSHORE AT  
CREEK BEACH

BUILDING 2  
MEZZANINE LEVEL  
UNIT M03

1 BEDROOM

APARTMENT AREA	54.96 SQ.M.	591.58 SQ.FT.
BALCONY AREA	8.40 SQ.M.	90.42 SQ.FT.
TOTAL AREA	63.36 SQ.M.	682.00 SQ.FT.



FLOOR PLAN 1. All dimensions are in imperial and metric, and measured from finish to finish excluding construction tolerances. 2. All materials, dimensions, and drawings are approximate only. 3. Information is subject to change without notice, at developer's absolute discretion. 4. Actual area may vary from the stated area. 5. Drawings not to scale. 6. All images used are for illustrative purpose only and do not represent the actual size, features, specifications, fittings, and furnishings. 7. The developer reserves the right to make revisions / alterations, at it's a absolute discretion, without any liability whatsoever.

DUBAI CREEK  
HARBOUR

BAYSHORE AT  
CREEK BEACH

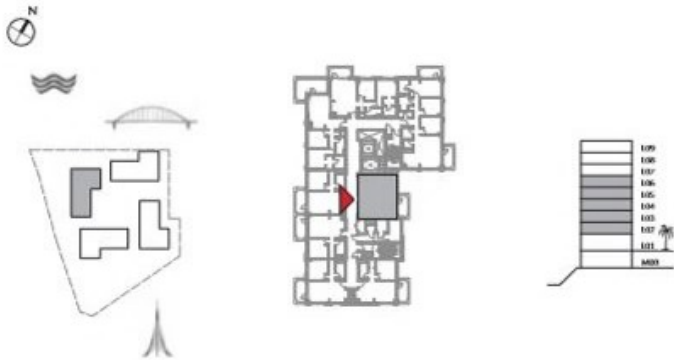
BUILDING 2

LEVEL 2, 3, 4, 5, 6

UNIT 201, 301, 401, 501, 601

1 BEDROOM

APARTMENT AREA	55.35 SQ.M.	595.78 SQ.FT.
BALCONY AREA	7.60 SQ.M.	81.81 SQ.FT.
TOTAL AREA	62.95 SQ.M.	677.59 SQ.FT.



FLOOR PLAN 1. All dimensions are in imperial and metric, and measured from finish to finish excluding construction tolerances. 2. All materials, dimensions, and drawings are approximate only. 3. Information is subject to change without notice, at developer's absolute discretion. 4. Actual area may vary from the stated area. 5. Drawings not to scale. 6. All images used are for illustrative purpose only and do not represent the actual size, features, specifications, fittings, and furnishings. 7. The developer reserves the right to make revisions / alterations, at its absolute discretion, without any liability whatsoever.

DUBAI CREEK  
HARBOUR

BAYSHORE AT  
CREEK BEACH

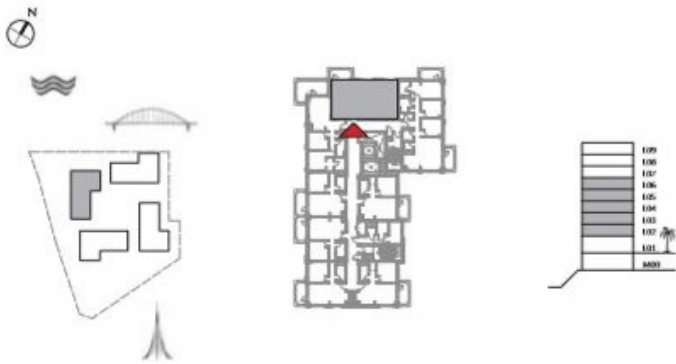
BUILDING 2

LEVEL 2, 3, 4, 5, 6

UNIT 207, 307, 407, 507, 607

2 BEDROOM

APARTMENT AREA	83.50 SQ.M.	898.79 SQ.FT.
BALCONY AREA	7.40 SQ.M.	79.65 SQ.FT.
TOTAL AREA	90.90 SQ.M.	978.44 SQ.FT.



FLOOR PLAN 1. All dimensions are in imperial and metric, and measured from finish to finish excluding construction tolerances. 2. All materials, dimensions, and drawings are approximate only. 3. Information is subject to change without notice, at developer's absolute discretion. 4. Actual area may vary from the stated area. 5. Drawings not to scale. 6. All images used are for illustrative purpose only and do not represent the actual size, features, specifications, fittings, and furnishings. 7. The developer reserves the right to make revisions / alterations, at it's a absolute discretion, without any liability whatsoever.

DUBAI CREEK  
HARBOUR

BAYSHORE AT  
CREEK BEACH

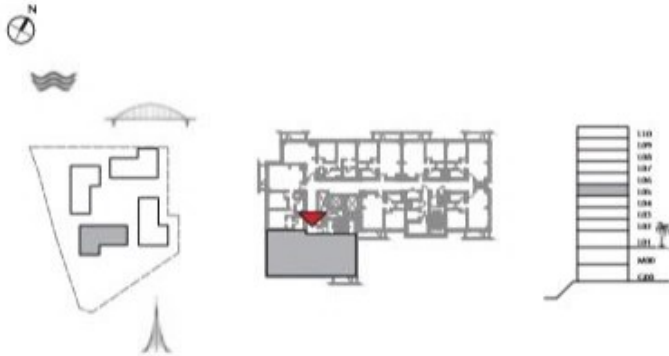
BUILDING 4

LEVEL 5

UNIT 508

3 BEDROOM

APARTMENT AREA	123.69 SQ.M.	1331.39 SQ.FT.
BALCONY AREA	6.01 SQ.M.	64.69 SQ.FT.
TOTAL AREA	129.70 SQ.M.	1396.08 SQ.FT.



FLOOR PLAN 1. All dimensions are in imperial and metric, and measured from finish to finish excluding construction tolerances. 2. All materials, dimensions, and drawings are approximate only. 3. Information is subject to change without notice, at developer's absolute discretion. 4. Actual area may vary from the stated area. 5. Drawings not to scale. 6. All images used are for illustrative purpose only and do not represent the actual size, features, specifications, fittings, and furnishings. 7. The developer reserves the right to make revisions / alterations, at it's a absolute discretion, without any liability whatsoever.

DUBAI CREEK  
HARBOUR

BAYSHORE AT  
CREEK BEACH

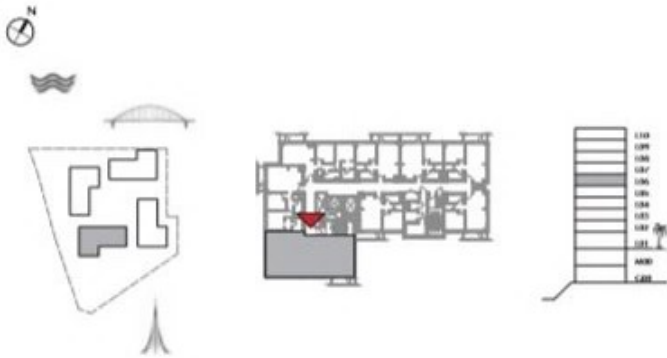
BUILDING 4

LEVEL 6

UNIT 608

3 BEDROOM

APARTMENT AREA	123.75 SQ.M.	1332.03 SQ.FT.
BALCONY AREA	6.01 SQ.M.	64.69 SQ.FT.
TOTAL AREA	129.76 SQ.M.	1396.72 SQ.FT.



FLOOR PLAN 1. All dimensions are in imperial and metric, and measured from finish to finish excluding construction tolerances. 2. All materials, dimensions, and drawings are approximate only. 3. Information is subject to change without notice, at developer's absolute discretion. 4. Actual area may vary from the stated area. 5. Drawings not to scale. 6. All images used are for illustrative purpose only and do not represent the actual size, features, specifications, fittings, and finishes. 7. The developer reserves the right to make revisions / alterations, at its absolute discretion, without any liability whatsoever.